

SPCC INSPECTIONS FOR INDUSTRY CODES AND NYDEC COMPLIANCE FOR ASTs

**Presented By:
Richard J. Hart
JD2 Environmental, Inc.**

INSPECTION DETAILS

- NYDEC Inspection Criteria
 - Periodic (Certified AST Inspector)
 - API 653 (Field Constructed)
 - STI SP-001 (Shop Fabricated)
 - Monthly (Facility performs)
 - What Are You Looking For?
 - Training
 - Record Keeping

INSPECTION REQUIREMENTS

- Inspection Criteria May Be Required By Regulations or By Industry Codes and Standards
 - Industry Codes
 - Shop Built – Pre-Manufactured Tanks
 - Steel Tank Institute (STI) SP001-11
 - Field Fabricated Tanks
 - American Petroleum Institute (API) 653

INSPECTION CHECKLISTS

- CHECKLIST DESIGNED FOR PERIODIC INSPECTION
 - DAILY
 - WEEKLY
 - MONTHLY AND QUARTERLY
 - SEMI-ANNUALLY
 - ANNUALLY
- INCLUDES COMMENTS AND ITEMS TO BE CORRECTED

PERIODIC INSPECTION PROTOCOL

- DONE BY A CERTIFIED AST INSPECTOR
 - API 653 AST Inspector
 - STI SP-001 AST Inspector
- SET-UP TO INSPECT FACILITIES ON A PERIODIC BASIS, per SPCC Plan
- AREAS WHERE COMMENTS INDICATE DEFICIENCIES SHOULD INCLUDE:
 - SPECIFIC INSTRUCTIONS FOR CORRECTIVE ACTION
 - A TIME FRAME FOR COMPLETION

FACILITY INSPECTION PROTOCOL

- PROPERLY TRAINED IN NYDEC/SPCC INSPECTION REQUIREMENTS
- MUST COMPLETE AND SIGN INSPECTION CHECKLIST TO BE KEPT ONSITE
- INSPECTION MUST INCLUDE A COMMENT SECTION FOR ANY DEFICIENCIES NOTED

FACILITY INSPECTION: WHAT ARE WE LOOKING FOR?

- Foundation condition
 - Level?
 - Cracked?
- Grounding
 - Present and in good condition?
- Tank Anchoring
- Tank Exterior (Applies to Both DW and SW)
 - Dents, bulges, holes??
 - Coating Condition?
 - (Any Corrosion Present?)

























Paint Condition





FACILITY INSPECTION: WHAT ARE WE LOOKING FOR?

- Secondary Containment Dry?
 - SW – Containment Free of Product/Water?
 - SW – Containment Intact?
 - DW – Interstitial/Annular Space Dry?
 - Leak Gauge or Manually check
- Primary Venting
 - Proper Vent Cap Present?
 - Free of Restrictions (Bee's nest, etc.?)
- Emergency Venting
 - Operates Freely?



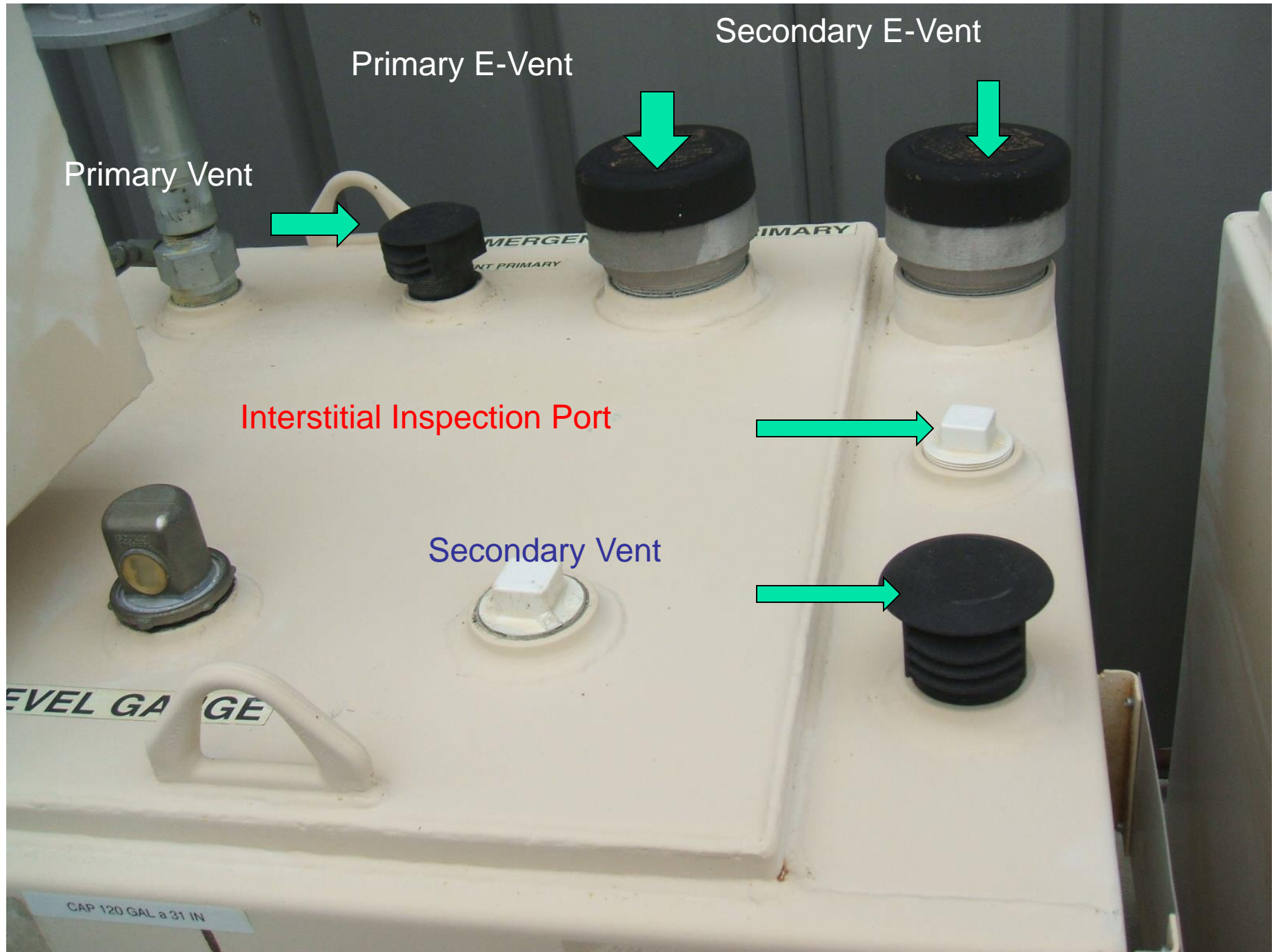


Interstitial Monitoring









FACILITY INSPECTION: WHAT ARE WE LOOKING FOR?

- **Tank Top Equipment**
 - Tank gauge operating correctly?
 - Overfill Alarm Present and Functioning?
 - Emergency Stop Present and Functioning?
 - Overfill device present?
 - Spill Containment Clean and Dry?
 - Piping /Pumps:
 - Properly Supported?
 - Piping Properly coated?
 - Signs of leaks?





Overfill/High Level Alarm

Ensure they are functioning properly.

- Depress the test button to activate. Both the visual and audible alarm should be activated. If switch is not working immediately note on comment section and call contractor to repair.
- Confirm that alarm is labeled



Emergency Stop (E-Stop)

- Test Monthly To confirm proper operation. Shut-off should kill power to the dispenser and submersible pump.



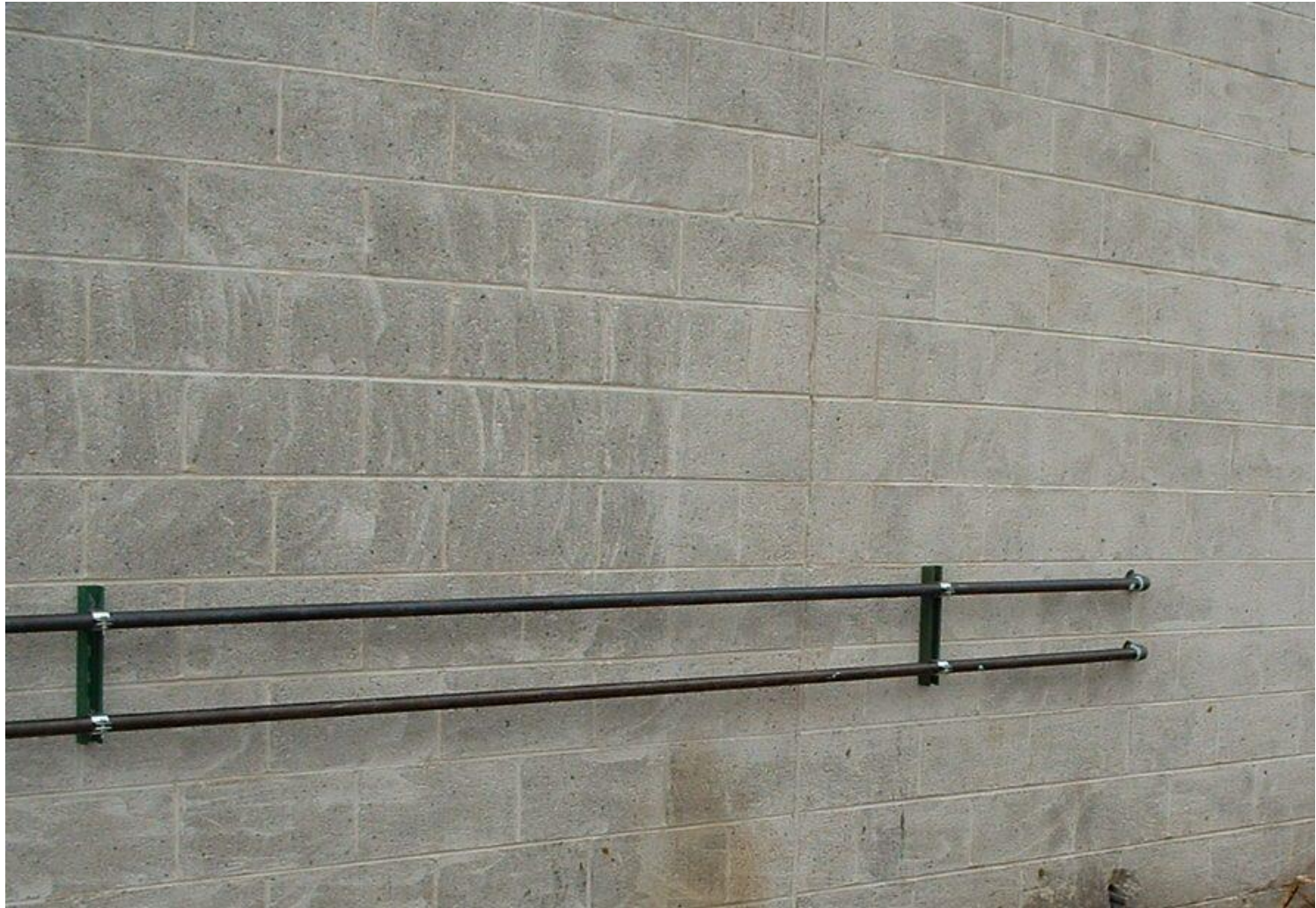






02.27.2008 11:06

Piping Support



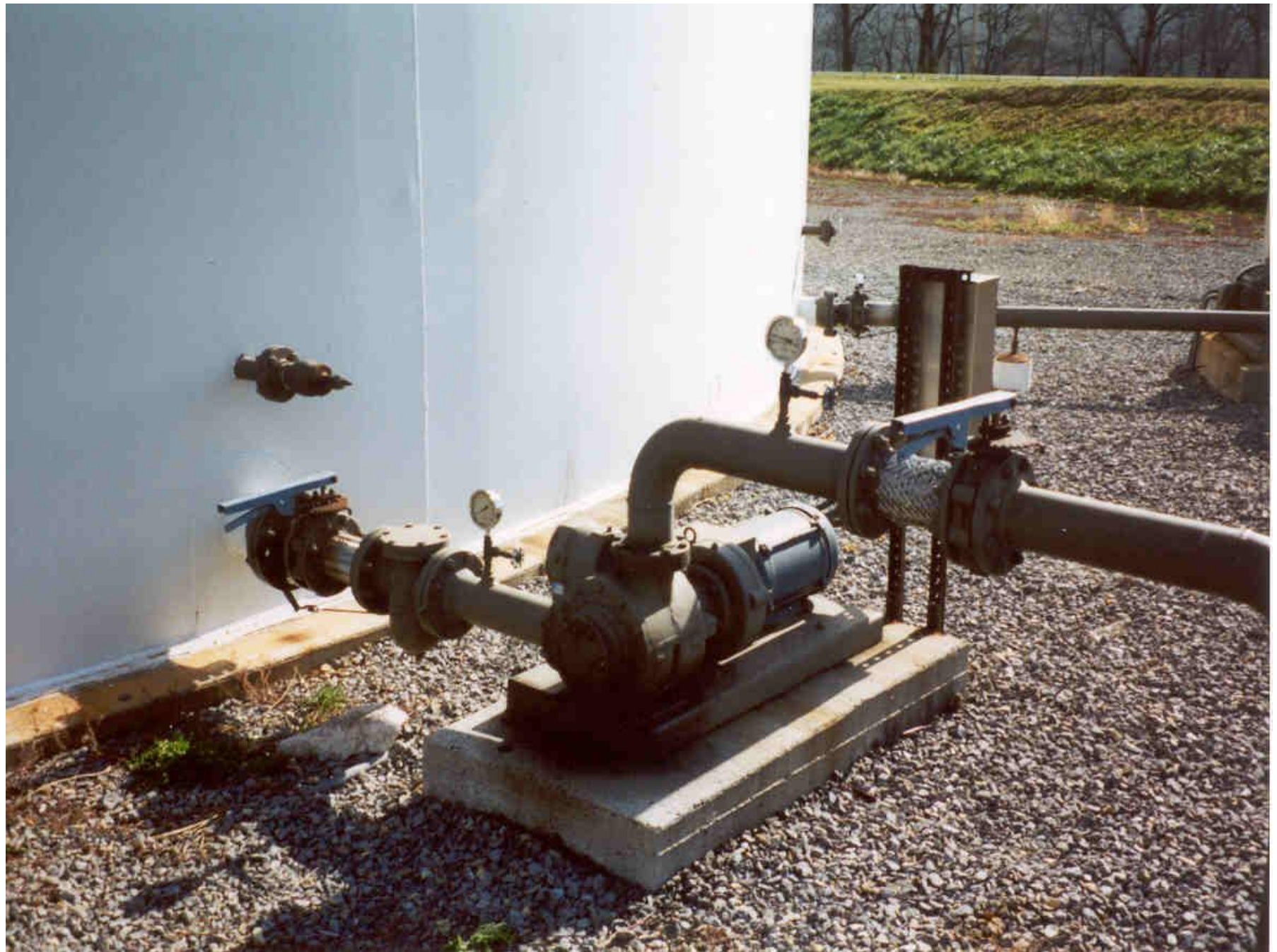






PUMP INSPECTIONS

- Foundation cracks and uneven settling
- Leaking pump seals or connections
- Missing or loose anchor bolts
- Excessive vibrations and noise
- Deteriorating Insulation
- Burning Odor or Smoke
- Excessive Dirt or Corrosion
- Missing Equipment





FACILITY INSPECTION: WHAT ARE WE LOOKING FOR?

- Other Tank Equipment
 - Dispensers...Any leaks?
 - Vehicle Protection (Bollards)?
 - Security Fence?
 - Stairs/Ladders in Sound Condition?
 - House Keeping Issues?
 - Containment and Tank Area Free of Combustible Material?





1. Secure the area and keep people away from the spill.
2. Shut off all equipment at the spill site.
3. Locate and contain the spill.
4. Block off the spill area.
5. From a safe location, call the fire department.
6. From a safe location, call the spill response team.
7. Return to the spill area, if safe.

DRIVER WARNING

When loading or unloading, always use proper tie-down technique. Do not exceed the rated capacity of the tie-downs. Always use proper tie-down technique. Do not exceed the rated capacity of the tie-downs. Always use proper tie-down technique. Do not exceed the rated capacity of the tie-downs.

0079

GALLONS

BENNETT

DANGER!
COMBUSTIBLE

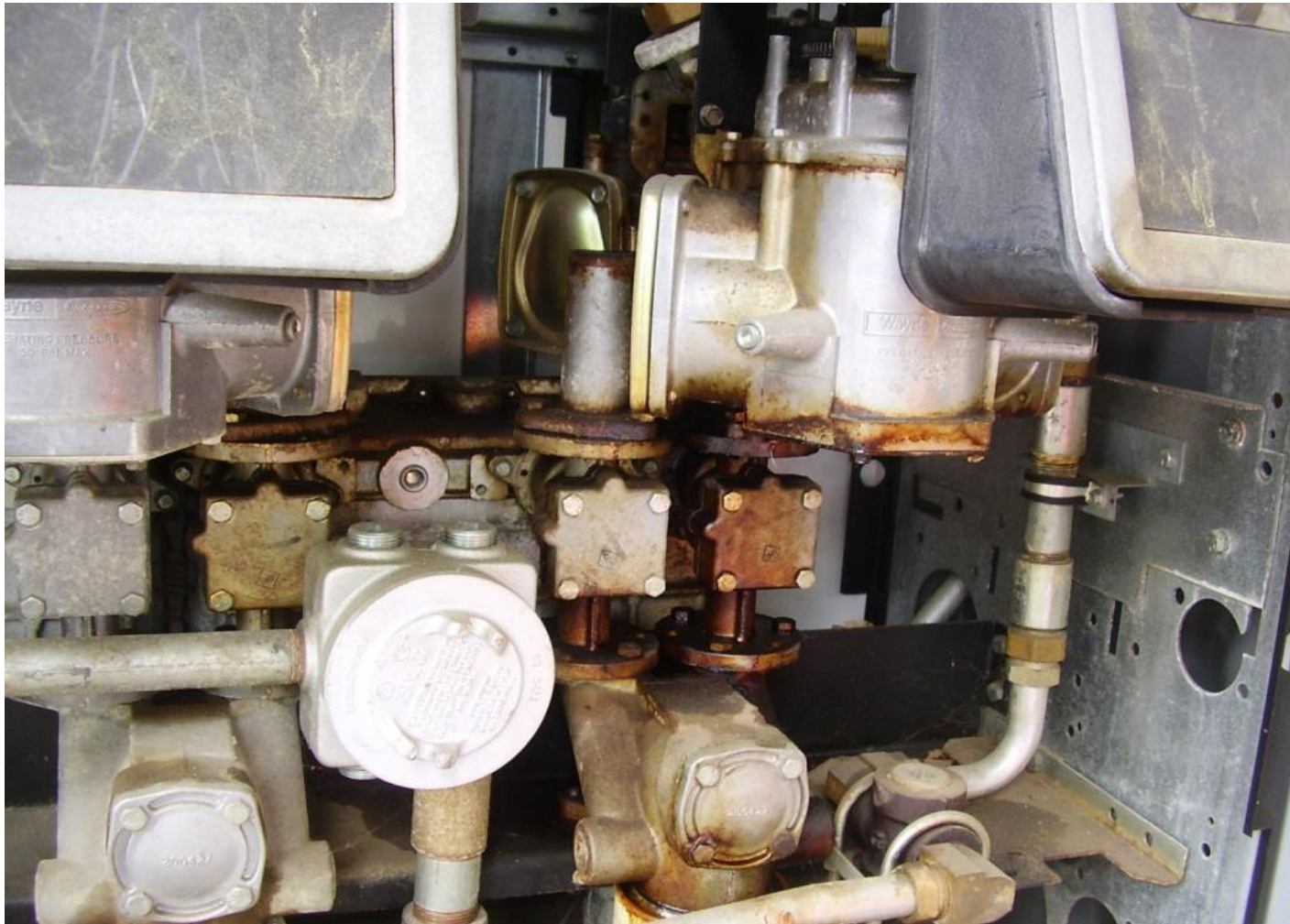
DIESEL FUEL



Check inside the dispenser cabinets for leaks



Look For Leaks



Vehicle Protection





Check Stairways and Ladders







FACILITY INSPECTION: WHAT ARE WE LOOKING FOR?

- Tank Labeling
 - NYDEC PBS Tank ID Number?
 - Tank Size (Inches and Gallons)?
 - Working Capacity (Inches and Gallons)?
 - Tank Contents?
 - NFPA Hazard Identification Diamond?
 - Fill API Color Coded?
 - Driver Warning Sign?
 - In Case of Spill Sign?

Proper Signage



HYDRAULIC FLUID



MAXIMUM TANK CAPACITY	
280	GALLONS
45"	INCHES
WORKING CAPACITY	
252	GALLONS
40"	INCHES

06.14.2008

TANK #2 NEW MOTOR OIL
250 GAL. A/G LUBE CUBE
225 GAL. WORKING CAPACITY

INSTALLED: 08/01/1987





DRIVER WARNING

**DO NOT INITIATE FUEL OR OIL TRANSFERS PRIOR TO
CHECKING IN WITH FACILITY PERSONNEL.**

*Tank Truck Drivers are responsible for following DOT Procedures
(49 CFR Parts 177.834 and 177.837)*

- Shut down engine unless used for transfer pumping operation
- Set brakes and chock wheels prior to and for the duration of all fuel and oil transfers
- Perform bonding/grounding prior to fuel and oil transfers, if necessary
- No smoking during fuel and oil transfers
- Use drip pails below hose connections during fuel and oil transfers
- Remain within 25 feet and maintain an unobstructed view of cargo tank and hose at all times during fuel and oil transfers
- Inspect vehicle drains and outlets for leakage prior to loading and prior to vehicle departure; make necessary adjustments or repairs prior to departure
- Verify complete disconnect of hoses and bonding/grounding prior to removal of wheel chocks

**DO NOT DEPART PRIOR TO CHECKING OUT WITH
FACILITY PERSONNEL**

FILL PAINTING STANDARD BASED ON API 1637

GASOLINES WITH EXTENDERS

SUPER



SPECIAL

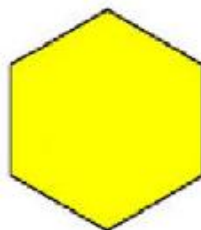


REGULAR



DISTILLATES

DIESEL



#2 FUEL OIL



KEROSENE



OTHER SYMBOLS

USED OIL



VAPOR RECOVERY



OBSERVATION OR
MONITORING WELL



COAXIAL
VAPOR RECOVERY

RECORD KEEPING

- Copies of Past Inspections
- Installation Documentation
- Maintenance Records
- Leak Detection Records
- Registration and Permits





You would not believe.....

**But, these photos are real!
And the tanks were in
service!**



















BULK
POLYMER
TANK







FUEL OIL TANK
3,000 GALLON
CAPACITY

DIE